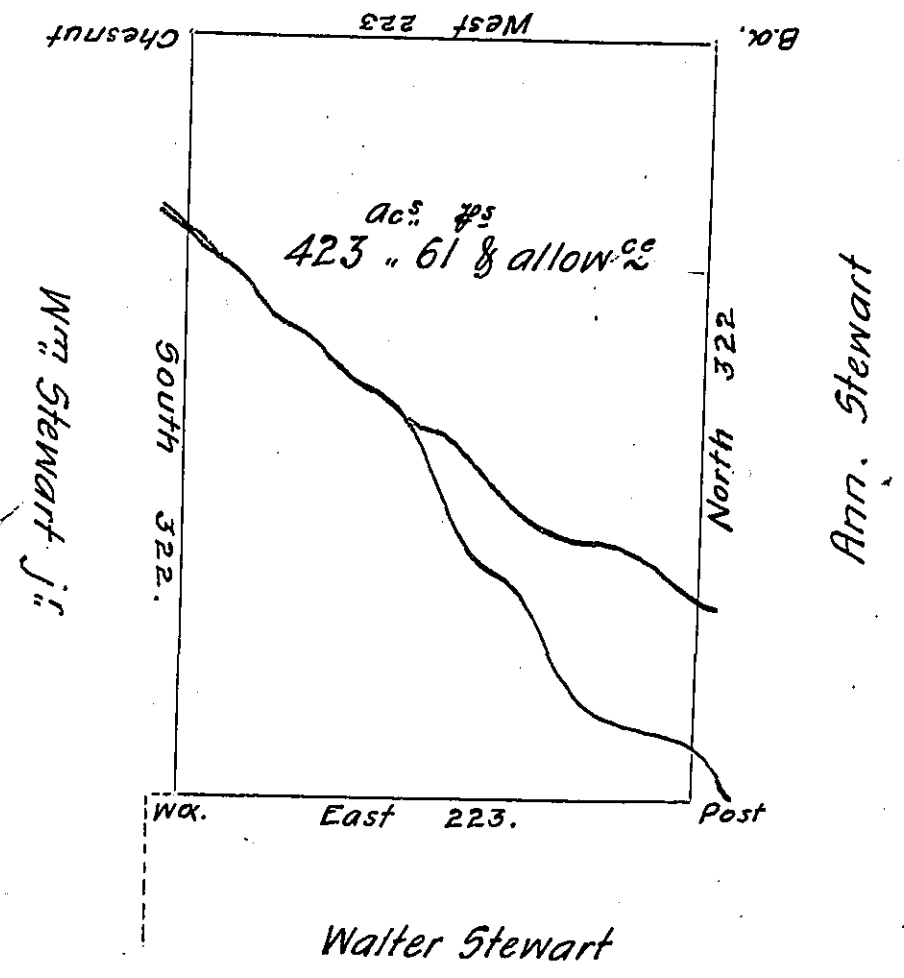


Surveyed land.



Situate on the waters of Spruce Run in Stewarts Valley Huntingdon County Surveyed the 9th Day of October 1792 to Henry Stewart on his Warrant dated the 27th Day of July 1792 containing four hundred and twenty three Acres sixty one perches and the Allowance of Six $\frac{1}{2}$ Cent for Roads &c

Daniel Brodhead Esq^r.
 Survf General.

John Canan D.S.

IN TESTIMONY that the above is a copy of the original remaining on file in the Department of Internal Affairs of Pennsylvania, made conformably to an Act of Assembly approved the 16th day of February, 1833, I have hereunto set my Hand and caused the Seal of said Department to be affixed at Harrisburg, this tenth day of December 1906

James W. Brown
 Secretary of Internal Affairs.